



Product Service

# CERTIFICATE

No. B 16 03 90230 006 Rev. 02

**Holder of Certificate:** Shenzhen Lilutong Electronic Technology Co.,Ltd

3rd Floor, A Building, No.55 Pingxin North Road, Shangmugu Community Pinghu Street, Longgang District 518111 Shenzhen PEOPLE'S REPUBLIC OF CHINA



**Certification Mark:**



**Product:** Connector

The component was tested on a voluntary basis and complies with the essential requirements of the standard(s) stated above. Fulfillment of further standard's requirements shall be observed when installing the component in the end product. The certification mark shown above can be affixed on the product. It is not permitted to alter the certification mark in any way. In addition the certificate holder must not transfer the certificate to third parties. See also notes overleaf.

**Internal reference no.:** B1 18 01 90230 009

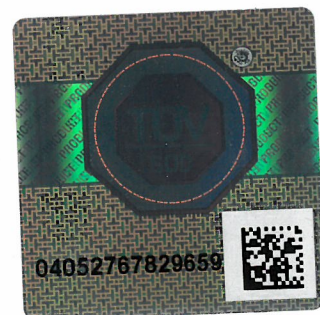
**Test report no.:** 64100140229105

**Valid until:** 2023-01-07

*Boris Ouyang*

**Date,** 2018-01-09 ( Boris Ouyang )

Page 1 of 3





**CERTIFICATE**

**No. B 16 03 90230 006 Rev. 02**

**Model(s):**

**LLT-M12-15 series, LLT-M14-15 series, LLT-M15-15 series, LLT-M16-15 series, LLT-M19-25 series, LLT-M19-15 series, LLT-M22-25 series, LLT-M25-30 series, LLT-M25-25 series, LLT-M29-30 series, LLT-M29-25 series**

**Parameters:**

Rated current:	See page 3 for details
Rated voltage:	See page 3 for details
Nature of supply voltage:	AC
Rated insulation voltage:	For LLT-M12-15 series: 100VAC For others: 250VAC
Overvoltage category:	II
Pollution degree:	2
Number of poles:	See page 3 for details
IP code:	IP67 (after mating) (for LLT-Maa-bbxxxzyzws series, z=1 or 3); IP00 (for LLT-Maa-bbxxxzyzws series, z=2)
Temperature range (LLT-ULT):	-40°C to +105°C
Type of terminals:	Solder
Connectable conductors:	Flexible
Wire cross-section area:	See page 3 for details
With or without breaking capacity:	With breaking capacity (CBC) (for LLT-M16-15xxxzy3sY series); Without breaking capacity (COC except LLT-M16-15xxxzy3sY series)
Number of operating cycles/ mechanical endurance:	5000 (except LLT-M16-15xxxzy3sY series)
Number of operating cycles/ electrical endurance:	2000 (for LLT-M16-15xxxzy3sY series)

**Tested according to:**

EN 61984:2009

**Production Facility(ies):**

90230



# CERTIFICATE

No. B 16 03 90230 006 Rev. 02

Table 1 Description the rule of the designation of the connectors:						
Model	No. of pole	Rated current (At 25°C)	Rated voltage	Method of internal connection	No. of output ports	Wire cross-section area
LLT-M12-15 series	2,3 or 1+PE, 2+PE	15A	100V	-	-	1.0mm <sup>2</sup>
LLT-M14-15 series	2,3,4 or 1+PE, 2+PE, 3+PE	15A	250V	-	-	1.0mm <sup>2</sup>
LLT-M15-15 series	2,3,4 or 1+PE, 2+PE, 3+PE	15A	250V	Series or shunt or nil	1-6	1.0mm <sup>2</sup>
LLT-M16-15xxxzyuws	2,3,4 or 1+PE, 2+PE, 3+PE	15A	250V	Series or shunt or nil	1-6	1.0mm <sup>2</sup>
LLT-M16-15xxxzy3sY series	2,3,4 or 1+PE, 2+PE, 3+PE	15A	250V	-	-	1.0mm <sup>2</sup>
LLT-M19-25 series	2,3,4 or 1+PE, 2+PE, 3+PE	25A	250V	-	-	2.5mm <sup>2</sup>
LLT-M19-15 series	5 or 4+PE	15A	250V	-	-	1.0mm <sup>2</sup>
LLT-M22-25 series	2,3,4 or 1+PE, 2+PE, 3+PE	25A	250V	-	-	2.5mm <sup>2</sup>
LLT-M25-30 series	2,3,4 or 1+PE, 2+PE, 3+PE	30A	250V	-	-	4.0mm <sup>2</sup>
LLT-M25-25 series	5,6 or 4+PE, 5+PE	25A	250V	-	-	2.5mm <sup>2</sup>
LLT-M29-30 series	2,3,4 or 1+PE, 2+PE, 3+PE	30A	250V	-	-	4.0mm <sup>2</sup>
LLT-M29-25 series	5,6 or 4+PE, 5+PE	25A	250V	-	-	2.5mm <sup>2</sup>

**LLT-Maa-bbxxxzyuw**  
 "aa" denotes diameter of thread: "aa" can be 12, 14, 15, 16, 19, 22, 25, 29;  
 "bb" denotes rated current: "bb" can be 15A, 25A, 30A;  
 "xxx" denotes no. of poles, "xxx" can be 002, 003, 004, 005, 006;  
 "y" denotes of type of connector, "y" can be F (female), M (male);  
 "z" denotes method of connection/ installation, "z" can be 1=soldering (with cable gland, free), 2=soldering (without cable gland, panel-mount), 3=moulding (free);  
 "u" denotes internal connection of connector, "u" can be 1= series, 2= shunt, or nil;  
 "w" denotes no. of output ports, "w" can be 1, 2, 3, 4, 5, 6 or nil.  
 "s" denotes with or without earth contact, "s" can be Y= with, N= without.

**LLT-M16-15xxxzy3sn series**  
 "xxx" denotes no. of poles, "xxx" can be 002, 003, 004;  
 "y" denotes of type of connector, "y" can be F (female), M (male);  
 "s" denotes with or without earth contact, "s" can be Y= with, N= without.  
 "n" denotes with or without breaking capacity, "n" can be Y= with, N= without.

Test report no.: 64100140229105

Date, 2018-01-09



China

TÜV SÜD Certification and Testing (China) Co., Ltd. Guangzhou Branch  
5F, Communication Building, 163 Pingyun Rd, Huangpu Ave. West Guangzhou, Guangdong, P. R. China

Choose certainty.  
Add value.

Shenzhen Lilutong Electronic Technology Co.,Ltd  
3rd Floor, A Building, No.55 Pingxin North Road, Shangmugu Community,  
Pinghu Street, Longgang District, Shenzhen

Your reference/letter of	Our reference/name	Tel. extension/e-mail	Fax extension
		+86 20 3815 3209	+86 20 38320478

**Subject: Your TÜV SÜD CERTIFICATE**

Dear Sir or Madame,

We are pleased to send you your below listed certificate(s) , which entitle you to label your certified product(s) with the respective certification mark as applicable.

<u>Certificate No.</u>	<u>Product</u>	<u>Model</u>
<b>B 16 03 90230 006 Rev. 02</b>	<b>Connector</b>	<b>LLT-M12-15 series, LLT-M14-15 series, LLT-M15-15 series, etc</b>

Further, we like to remind you on following information, which are applicable to all certificate holders:

- As a certificate holder, you have contractual obligations to the related TÜV SÜD certification body as outlined in global "Testing and Certification Regulations" of TÜV SÜD, which you can receive from us or download at: <http://www.tuv-sud.cn/cn-en/terms-and-conditions>.
- If the products listed on the certificate will be exported to European Market, the name of the certificate holder (manufacturer) and the name and address of the importer or authorized representative based within the European Economic Area must be clearly affixed on the product or where that is not possible, on the packaging or in a document accompanying the product.
- The annual license fee will be **10** units for maintaining the validity of the certificate.
- To ensure that the validity of the certificate is not jeopardized, please inform us about any change in your production or of the product itself (this also includes changes to the user manual or rating label)
- If you want to stop the renewal of the above listed certificate(s) for the following year, please inform TÜV SÜD in writing by September 30 of the current year. If not received on time, the annual fee of the following year is to be paid and the cancellation will be done the year after.

If you have any question regarding your certificate(s) or the proper use of the certification mark on your products, please do not hesitate to contact us.

Yours sincerely, *Amo Zhu*

TÜV SÜD Certification and Testing (China)  
Co., Ltd Guangzhou Branch

HSBC Bank (China) Company Limited  
Guangzhou Branch  
Account No.:  
629-129339-011 (RMB)  
009-129339-055 (USD)  
SWIFT Code: HSBCCNHGHZ

General Manager:  
Mr. Likun Huang

Telephone: +86 20 3832 0668  
Telefax : +86 20 3832 0478  
[www.tuv-sud.cn](http://www.tuv-sud.cn)



TÜV SÜD Certification and Testing (China)  
Co., Ltd Guangzhou Branch  
5F, Communication Building,  
163 Pingyun Rd, Huangpu Ave. West  
Guangzhou, Guangdong, P. R. China  
510656